

# Yu-Fit Battery Configurator Tool



## Registration & Application Suite Installation Guide



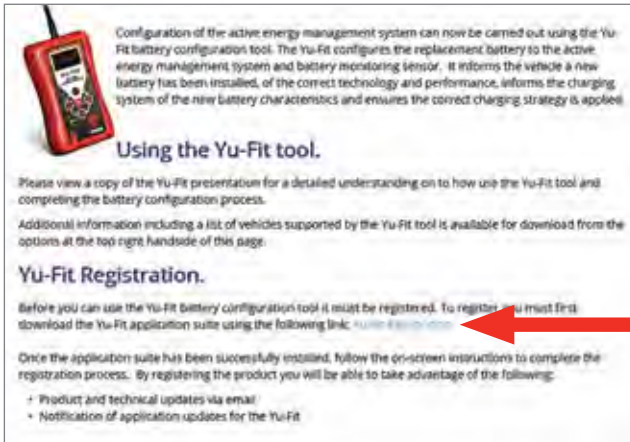
# Contents

Yu-Fit Application Suite Download	3
Yu-Fit Installation Procedure	4
Yu-Fit Registration Procedure	7
Yu-Fit Update Procedure	9
Notes	11

# Yu-Fit Application Suite Download

Before using the Yu-Fit tool you first need to download the supporting software to your local computer. Follow this procedure to download the latest PC Suite from the [www.yuasabatteries.co.nz](http://www.yuasabatteries.co.nz) website. If you experience any problems contact Technical Support on **0800 93 93 93**.

1. Scroll to the bottom of the page and select the **'Yu-Fit Registration'** link.



The screenshot shows the Yu-Fit website content. At the top left is an image of the Yu-Fit tool. The main text describes the tool's function: "Configuration of the active energy management system can now be carried out using the Yu-Fit battery configuration tool. The Yu-Fit configures the replacement battery to the active energy management system and battery monitoring sensor. It informs the vehicle a new battery has been installed, of the correct technology and performance, informs the charging system of the new battery characteristics and ensures the correct charging strategy is applied." Below this is a section titled "Using the Yu-Fit tool." which includes instructions to view a presentation and download additional information. A section titled "Yu-Fit Registration." follows, stating that the tool must be registered and providing a link to the registration page. A red arrow points to this link. Below the registration section, there are bullet points listing benefits: "Product and technical updates via email" and "Notification of application updates for the Yu-Fit".

2. Select **'Run'**



This screenshot is identical to the one above, but it includes a Windows dialog box at the bottom. The dialog box has a yellow title bar and contains the text: "Do you want to run or read Yu-Fit Suite Setup (PC.exe) (3.33.432) from the internet?" Below the text is a small icon of a document and the instruction "This type of file could harm your computer." At the bottom of the dialog box are three buttons: "Run", "Open", and "Cancel".

# Yu-Fit Installation Procedure

Follow this procedure if you are installing the Yu-Fit PC Suite for the first time. If you experience problems with the installation please ensure that you have administrator rights on your PC. If you are still experiencing problems please use the web form on the website to contact us.

1. When you run the installer you are presented with a User Account Control message warning you that the application you are installing will make changes to your computer. It is imperative that you ensure that you have Administrator rights on the PC before continuing. Select **'Yes'**.
2. Wait while the PC prepares to install.



3. After you have run the Yu-Fit suite application, the **'Welcome to the Yuasa Yu-Fit Suite'** will be displayed, select **'Next'**.
4. The **'Select installation Folder'** screen will appear accept the folder if appropriate and select **'Next'**.



5. When the 'Confirm Installation' screen appears select 'Next'.



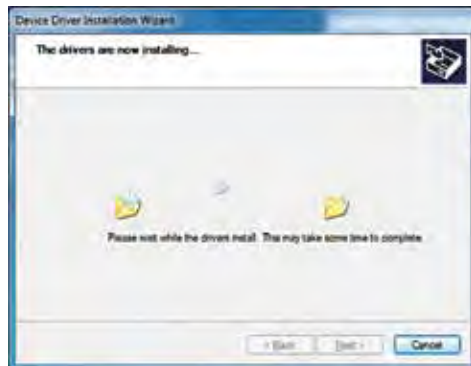
6. The 'Installing Yuasa Yu-Fit Suite' screen will be launched, once the software has been successfully installed select 'Next'.



7. As this is the first time that your Yu-Fit has been connected to your PC, the 'Device Driver Installation Wizard' popup will be displayed. Select 'Next'.



8. The installation will take a short time to complete; the screen below will be displayed during this process. Select 'Next'.



9. Your PC may give you a warning saying the Publisher is unknown. Select **'Install the driver software anyway'** to accept the changes that will be made.



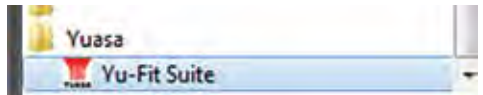
10. The **'Completing the Device Driver Installation Wizard'** screen is displayed, when your Yu-Fit has been detected. Select **'Finish'**.



11. You will see the screen **'Installation Complete'** that confirms that the installation was successful, select **'Close'**.



12. Run the Yu-Fit Suite Application from the start menu, select **'Start' – 'Programs' – 'Yuasa Yuasa – 'Yu-Fit Suite'**. (There will also be an icon installed onto your desktop).



# Yu-Fit Registration Procedure

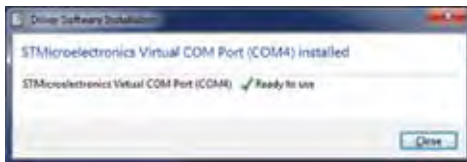
1. Read the Privacy Policy and accept before continuing.



2. Connect the USB supplied to the Yu-Fit and then to a USB port on the PC. A main USB port (on the rear of the PC) opposed to an extension (on the front of the PC)



3. The Driver should indicate that it is fully installed and ready to use. If this does not happen, go to the Installing Driver section.



4. When you press the 'Next' button, the Yu-Fit will be detected by the Yu-Fit Suite.



5. The Suite will then check if the internet connection is present. If you experience problems at this point you will be directed to the Tests & Checks section of the Yu-Fit Suite.



6. Complete the 'Product Registration' ensuring you complete all sections marked with a '\*'. Once complete press the 'Next' button.



7. Once the information has been submitted, the Subscription Number, Postcode, Email address and subscription expiry date will be displayed back. Although these details are stored on your PC, It would be worthwhile making a note of these details in case you require them in the future. Select 'Finish'.





# Yu-Fit Update Procedure

**1.** Run the YU-FIT Suite Application  
From the start menu, select **'Start' – 'All Programs' – 'Yuasa Yuasa – 'Yu-Fit Suite'**. (There will also be an icon installed onto your desktop).



**2.** Select the option **'Get YU-FIT Updates'**.



**3.** Connect the USB supplied to the Yu-Fit and then to a USB port on the PC. A main USB port (on the rear of the PC) opposed to an extension (on the front of the PC).



**4.** When you press the **'Next'** button, the Yu-Fit will be detected by the Yu-Fit Suite.



5. The Suite will then check if the internet connection is present. If you experience problems at this point you will be directed to the Tests & Checks section of the Yu-Fit Suite.



6. Follow the on screen instructions to update your tool to the latest version. A description of the updates will also be shown on screen. Select 'Download'.



## REMEMBER

The latest list of vehicles supported by the Yu-Fit is available @ [www.yuasabatteries.co.nz](http://www.yuasabatteries.co.nz)





For more information contact your  
YUASA Batteries specialist on **0800 4 YUASA**  
or visit **[www.yuasabatteries.co.nz](http://www.yuasabatteries.co.nz)**